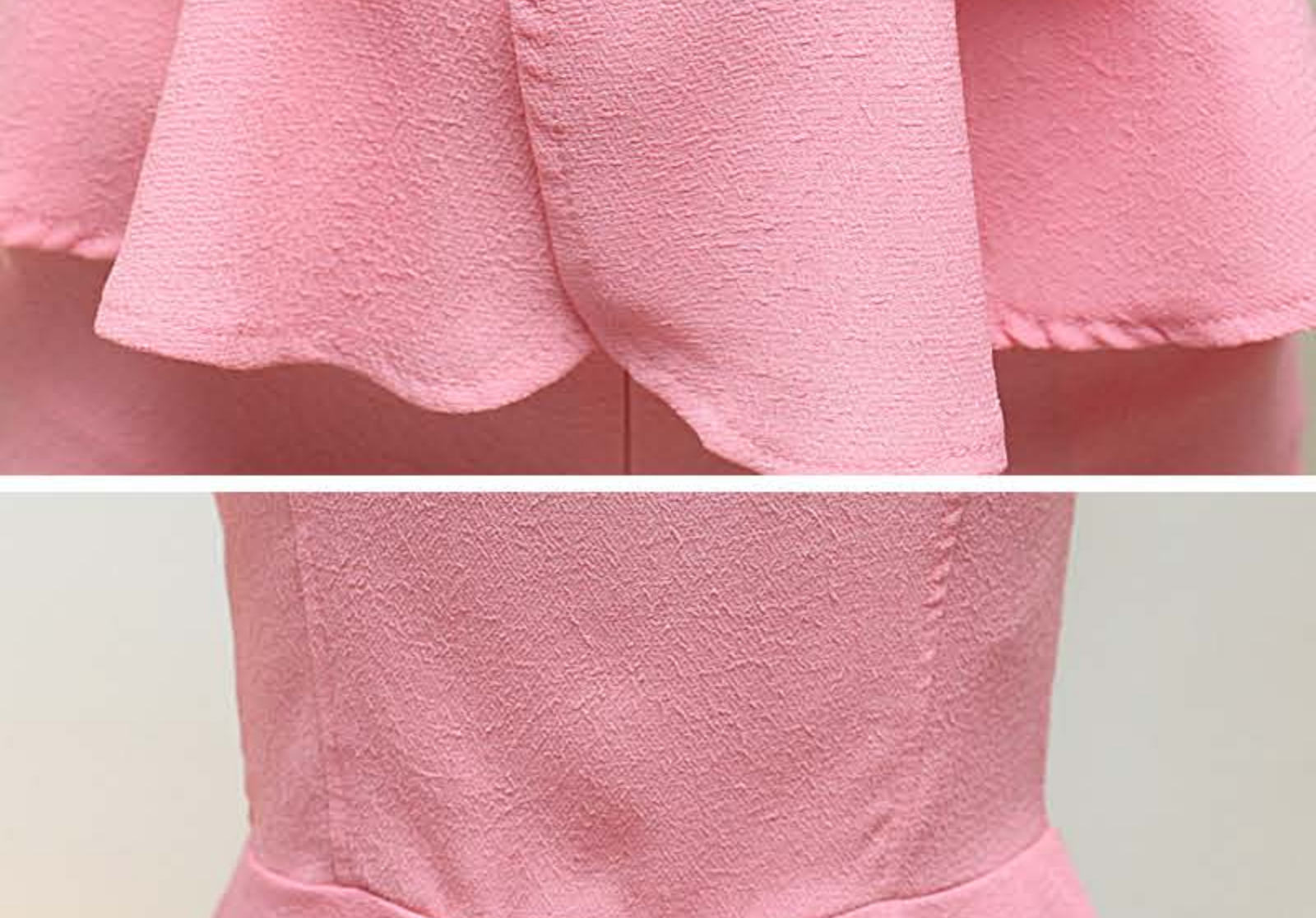
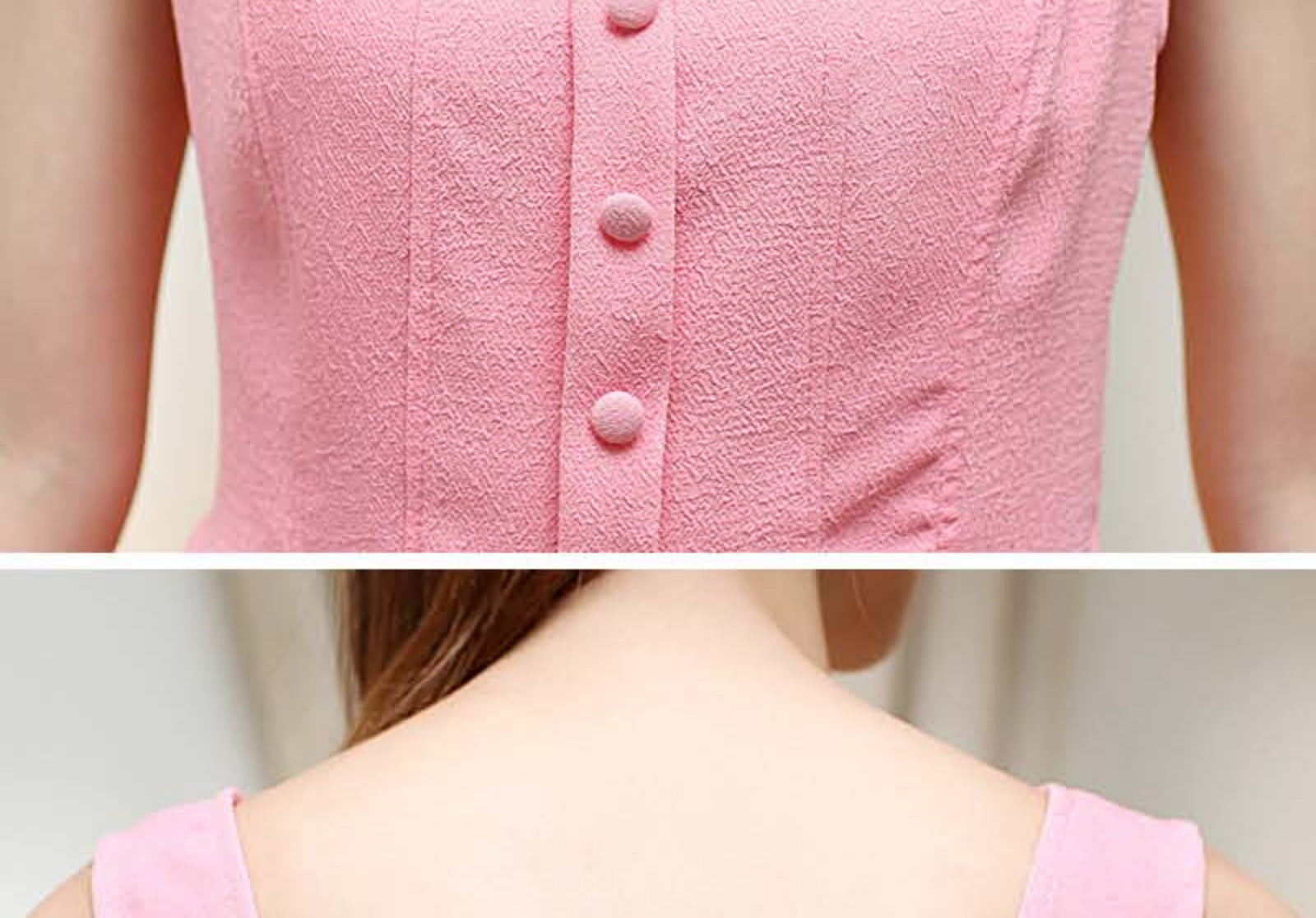


GROUP: GP
 CODE: 1
 COLOR: PINK
 MATERIAL: KOREA LINEN

SIZE (CM)	SHOULDER/肩宽	BUST/胸围	WAIST/腰围	LENGTH/衣长	LINING/衣衬	SLEEVE/袖长	CUFF/袖口	HEM/下摆	HIP/臀围
L	34	82	72	57					
BOTTOM			72	28				54	86

NOTE: The measurement might have a slight discrepancy of 1 to 3cm due to the method of measurement. Under different monitor display brightness & different exposure during photo taking, picture and product might have minor color discrepancy. This is not consider as product quality problem.

因不同的计量方式，尺码会有细微差异，标准误差在1-3cm内属于正常范围
 因个人显示器明亮度，以及拍摄光线等，图片和实物会有轻微色差，不属于质量问题。



GROUP:	GP
CODE:	11
COLOR:	GREEN
MATERIAL:	LINEN

SIZE (CM)	SHOULDER/肩宽	BUST/胸围	WAIST/腰围	LENGTH/衣长	LINING/衣衬	SLEEVE/袖长	CUFF/袖口	HEM/下摆	HIP/臀围
M									
TOP	53	100		60				84	
BOTTOM			30	29				62	100

NOTE: The measurement might have a slight discrepancy of 1 to 3cm due to the method of measurement. Under different monitor display brightness & different exposure during photo taking, picture and product might have minor color discrepancy. This is not consider as product quality problem.

因不同的计量方式，尺码会有细微差异，标准误差在1~3cm内属于正常范围
因个人显示器明亮度，以及拍摄光线等，图片和实物会有轻微色差，不属于质量问题。

成份 细麻

季节 夏季

配件 无

面料弹性	无弹性	轻微弹力	高弹力	厚度指数	厚款	厚度适中	薄款
版型	紧身	适中	宽松	长度	短款	中长款	长款

洗涤说明

洗涤小贴士

 手洗	 不可漂白	 悬挂晾干	 熨斗底板最高温度110°C	 不可干洗	1. 常温洗涤，随浸随洗 2. 分开洗涤，避免沾色 3. 不可拧干，不可滴干，避免衣物晾干后变形 4. 悬挂晾干，不可暴晒
--	--	--	---	--	--



GROUP:	GP
CODE:	10
COLOR:	GREEN
MATERIAL:	POLY

SIZE (CM)	SHOULDER/肩宽	BUST/胸围	WAIST/腰围	LENGTH/衣长	LINING/衣衬	SLEEVE/袖长	CUFF/袖口	HEM/下摆	HIP/臀围
M									
TOP	36	84		45		19	30		
BOTTOM			68	30				58	90
L									
TOP	38	90		47		20	32		
BOTTOM			72	31				60	94

NOTE: The measurement might have a slight discrepancy of 1 to 3cm due to the method of measurement. Under different monitor display brightness & different exposure during photo taking, picture and product might have minor color discrepancy. This is not consider as product quality problem.

因不同的计量方式，尺码会有细微差异，标准误差在1~3cm内属于正常范围
因个人显示器明亮度，以及拍摄光线等，图片和实物会有轻微色差，不属于质量问题。

一套两穿

STYLE 1



STYLE 2



BACK VIEW

